

# Hilton Baltimore

## Inner Harbor



## Accessible Features



### Public Areas

Accessible routes to all hotel facilities, outlets and meeting space



### Fitness Center

Accessible exercise facility and swimming pool



### Guest Rooms

Mobility and hearing accessible rooms



### Lobby

Accessible registration and concierge desks



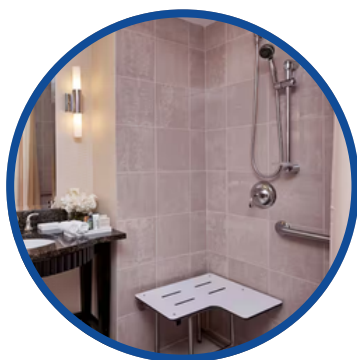
### Entry Measurements

Mobility accessible rooms feature 35.5" entry and bathroom doors



### Transportation

Accessible transportation with advanced notice



**Mobility Accessible  
with Roll-in Shower**  
11 Additional Portable  
Bathing Benches Available  
for Standard Rooms



**Accessible Routes**



**Mobility Accessible  
with Bathtub**

### Accessible Tub:

An accessible tub is a tub that has grab bars on two or three sides of the tub with a shower head that can be used as a handheld or fixed shower. There are two configurations of accessible tubs, as shown in the diagram below:

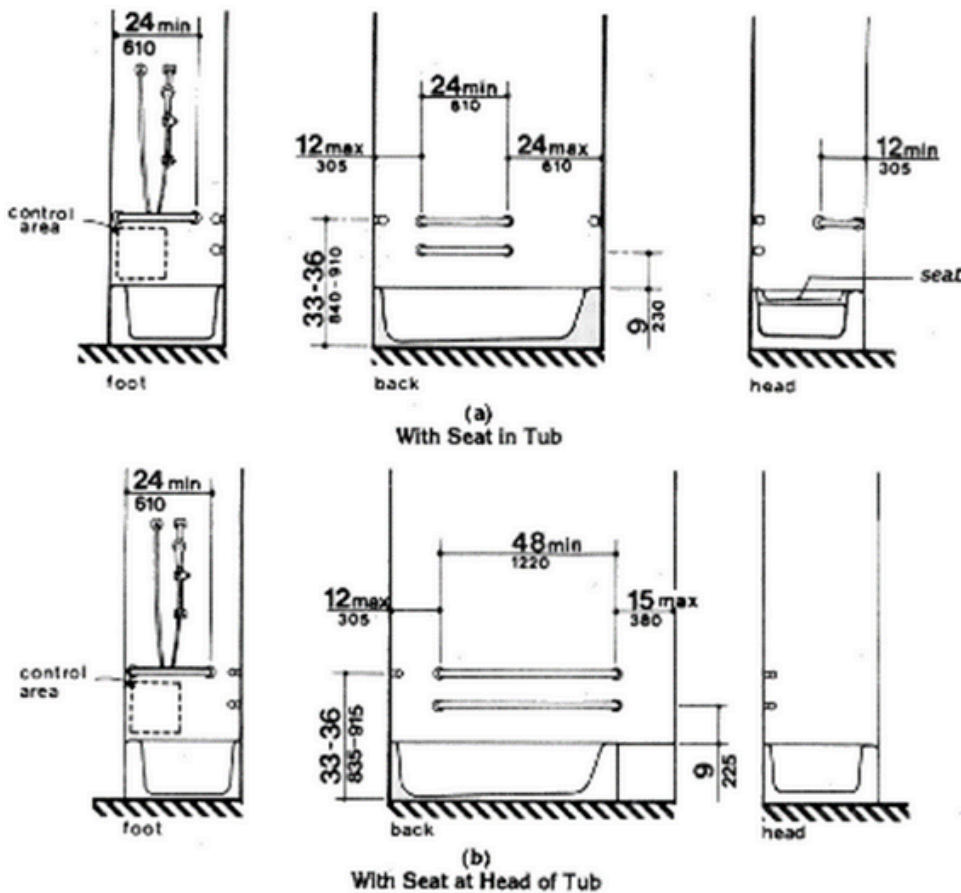
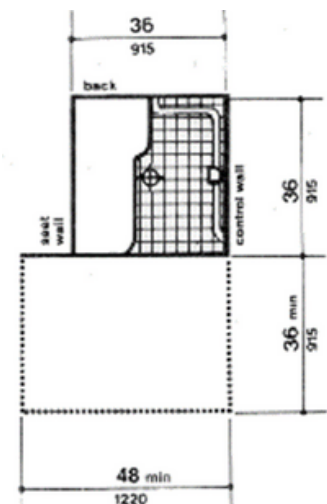


Diagram (a) shows an accessible tub that is designed for a portable or built-in fold down seat to be placed in the tub, as opposed to the accessible tub shown in diagram (b) which has a permanent seat at the head of the tub.

### 3'x3' Transfer Shower:

A transfer shower is a shower that is 3'x 3' in size with a built-in fold down seat on one wall and controls on the opposite wall. This type of shower has grab bars on the two walls to the side and front of the seat and a shower head that can be used as a handheld or fixed shower. The configuration of a transfer shower is to the right.



### Roll-In Shower:

A roll-in shower can have one of two configurations:

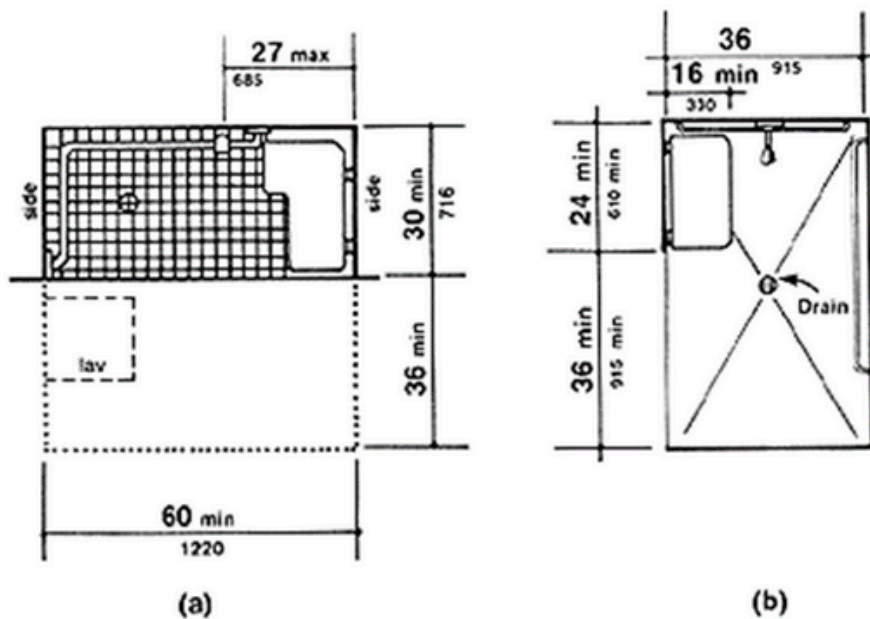


Fig. 57  
Roll-in Shower with Folding Seat

The shower in diagram (a) is 30" x 60" in size with a permanent fold-down seat mounted on the side wall and one 60" side fully open. The shower controls and shower head are on the back wall, and there are grab bars along the back wall and the wall opposite the seat. The shower in diagram (b) is 36" x 60" in size with a 36" wide entry. The permanent fold-down seat is mounted on the wall adjacent to the entry and the controls and shower head are mounted on the wall adjacent to the seat wall, and there are grab bars along the back wall and the wall opposite to the seat. Both configuration (a) and (b) roll-in showers have a shower head that can be used as a handheld or fixed shower.

### **Visual Alarm:**

A visual alarm is a permanently mounted fire alarm that has a strobe that flashes when the hotel's fire alarm sounds, or a portable device with a strobe that can be plugged in and that flashes when the hotel's fire alarm sounds. The portable visual alarm is usually a part of a communications kit for the hearing impaired. As explained in Step 2, if a hotel has no rooms with permanent visual alarms and relies on portable visual alarms, it will have to assign the portable alarms to specific rooms so that guests who need a room with that feature can book and receive a guarantee with that feature.

### **Visual Notification Device for Incoming Door Bell or Door Knock:**

This term refers a light that that flashes in the room when the doorbell rings or if there is a door knock. This visual notification device can be permanent or portable. As explained in Step 2, if a hotel has no rooms with permanent visual notification devices for the door knock or door bell and relies on a portable device typically contained in a communications kit for the hearing impaired, the hotel will have to assign the portable devices to specific rooms so that guests who need a room with these feature can book and receive a guarantee for a room with these features.

### **Visual Notification Device for Incoming Telephone Calls:**

This term refers to a light that flashes in the room when the telephone rings. This device can be permanent or portable. The visual notification device for the incoming telephone calls can be a light on the phone that flashes when the phone rings. As explained in Step 2, if your hotel has no rooms with this feature already in the room and relies on portable visual notification devices to perform this function, the hotel will have to assign these devices to specific rooms so that guests who need a room with this feature can book and receive a guarantee for a room with these features.